



SPACE HOMES

AFFORDABLE HOUSING



A home for everyone

SPACE HOMES by the *Space Quantum Company* are futureproof Affordable Homes, fitted with the latest smart home technologies and finished to the highest quality to inspire dignified living for all.





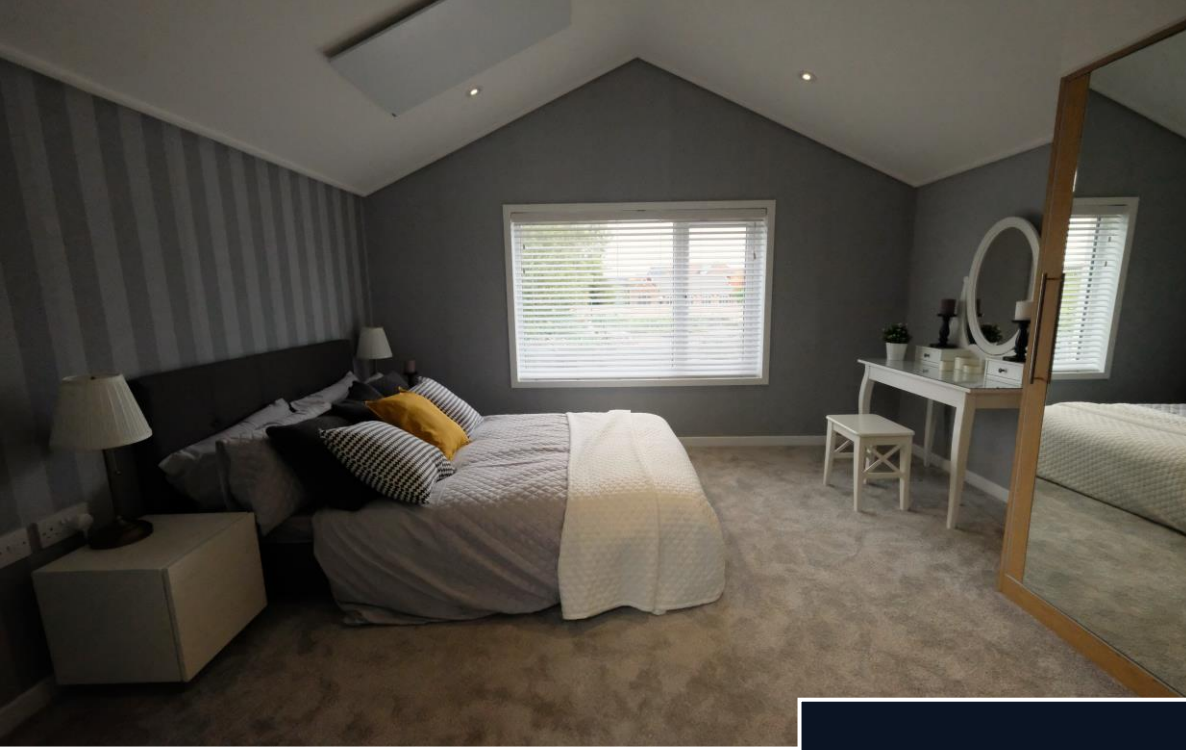
PEOPLE & PLANET

Made of recycled materials and embedded with energy-saving technologies, our eco-friendly SPACE HOMES conserve and restore nature, whilst nurturing communities through smartly-designed spaces that bring people together.

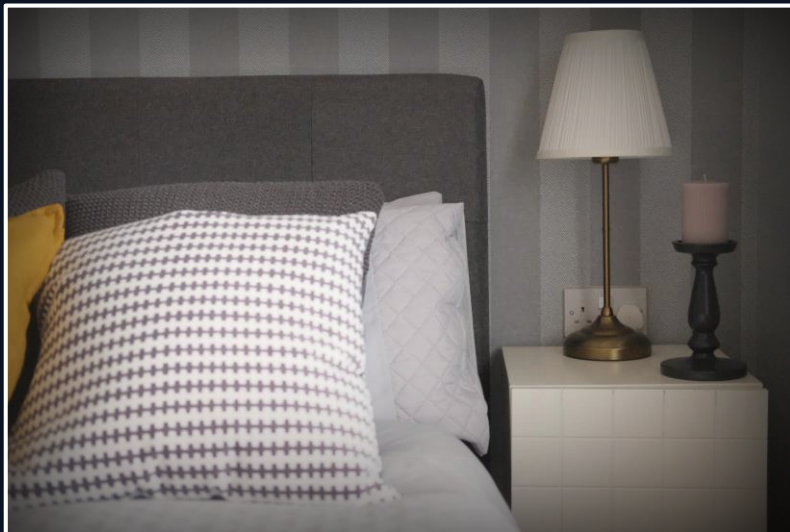


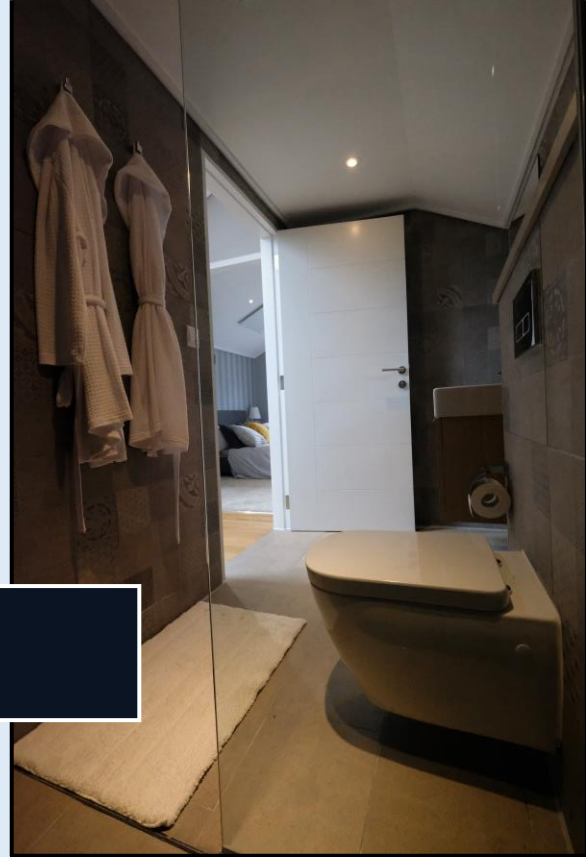
TOMORROW'S
HOMES TODAY.



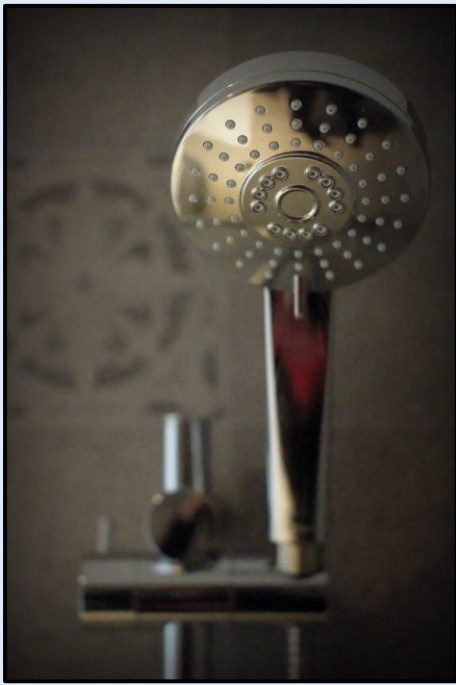


BEDROOMS





BATHROOMS





LIVING ROOM





KITCHEN



BENEFITS



80% lower
carbon footprint



50% lower energy bills



20% better acoustics



400% better fire
rating than
conventional build



300% stronger
build fabric



Birchfield Street, Liverpool
4 x 2 Bed Semi Detached Homes
For Liverpool City Council & Homes England



UPCOMING SCHEME:
Langton Park, Wroughton, Swindon, SN4 0QN
18 + 30 Affordable Homes
For Stonewater Housing Association & Swindon Borough Council



UPCOMING SCHEME

WROUGHTON, SWINDON

ADDRESS : Langton Park SN4 0QN

SIZE : Approx. 6695m².

LAND TYPE : Brownfield, previously an electrical substation

LOCALITY : 12 min drive to Swindon town centre
15 min drive to M4/A346 intersection



Swindon & Wiltshire News

Swindon & Wiltshire News Thursday November 25 2021

Author Name: Peter Davison

Stonewater and The Space Quantum Company to build high-tech affordable homes in Wroughton



PHASE 1: 18 Units
10 x 3 Bed House, 4 x 2 Bed House, 4 x 1 Bed Flat



PHASE 2: 30 units



